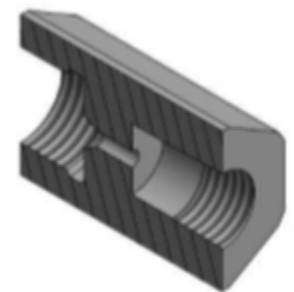
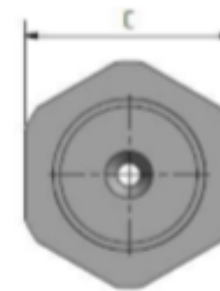
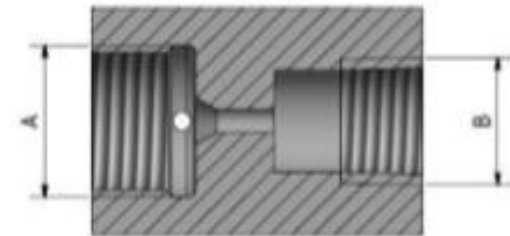


## Adapter NPT female

All adapters are designed for an operating pressure of 1.600 bar.  
Collar and gland are included in the scope of delivery.

pipe ∅	material	dimension				part number	
		A	B [mm]	C [mm]	L [mm]	60°	120°
3/16"	1.4542	M16x1,5	1/4"-NPT	SW 22	40	3MV1-01600-14-2	
1/4"	1.4542				40	3MV2-01600-14-2	
3/8"	1.4542	M20x1,5		SW 27	45	3MV3-01600-14-2	
9/16"	1.4542	M30x2		SW 36	60	3MV4-01600-14-2	
3/4"	1.4542	M26x2			65		3MF5-01600-14-2
1"	1.4542	M36x2		SW 55	70		3MF6-01600-14-2
30mm	1.4542	M42x2			70		3MF7-01600-14-2
1 1/2"	1.4542	M48x2		SW 60	85		3MF8-01600-14-2
3/16"	1.4542	M16x1,5	3/8"-NPT	SW 22	40	3MV1-01600-14-3	
1/4"	1.4542				40	3MV2-01600-14-3	
3/8"	1.4542	M20x1,5		SW 27	45	3MV3-01600-14-3	
9/16"	1.4542	M30x2		SW 36	60	3MV4-01600-14-3	
3/4"	1.4542	M26x2			65		3MF5-01600-14-3
1"	1.4542	M36x2		SW 55	70		3MF6-01600-14-3
30mm	1.4542	M42x2			70		3MF7-01600-14-3
1 1/2"	1.4542	M48x2		SW 60	85		3MF8-01600-14-3



## Adapter NPT female

All adapters are designed for an operating pressure of 1.600 bar.  
Collar and gland are included in the scope of delivery.

pipe ∅	material	dimension				part number	
		A	B [mm]	C [mm]	L [mm]	60°	120°
3/16"	1.4542	M16x1,5	1/2"-NPT	SW 22	45	3MV1-01600-14-4	
1/4"	1.4542				45	3MV2-01600-14-4	
3/8"	1.4542	M20x1,5		SW 27	50	3MV3-01600-14-4	
9/16"	1.4542	M30x2		SW 36	65	3MV4-01600-14-4	
3/4"	1.4542	M26x2			70		3MF5-01600-14-4
1"	1.4542	M36x2		SW 55	75		3MF6-01600-14-4
30mm	1.4542	M42x2			75		3MF7-01600-14-4
1 1/2"	1.4542	M48x2		SW 60	90		3MF8-01600-14-4

