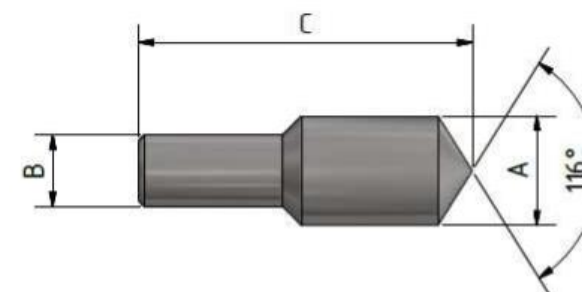


## Plug 116°-variant for 120° fittings

pipe ∅	material	DN pipe [mm]	DN fitting [mm]	nominal pressure PN [bar]	dimension			part number
					A [mm]	B [mm]	C [mm]	
3/4"	1.4542/48	11,0	12,5	1.400	24	19	55	30F5-0-9
	1.4542/48	3,2	4,0	12.000				
	1.4542/48	1,6	2,0	14.000				
1"	1.4542/48	14,3	15,0	1.400	32	25	70	30F6-0-9
	1.4542/48	11,0	12,5	2.100				
	1.4542/48	6,4	7,0	7.000				
30 mm	1.4542/48	10,0	12,0	4.200	39	30	65	30F7-0-9
1 1/2"	1.4542/48	23,8	25,0	1.000	44	38	80	30F8-0-9
	1.4542/48	12,7	14,0	3.500				



## Plugs 58°-variant for 60° fittings

pipe ∅	material	DN pipe	DN fitting	nominal pressure PN	dimension			part number
		[mm]	[mm]	[bar]	A [mm]	B [mm]	C [mm]	
3/16"	1.4542/48	0,6	1,6	14.000	9,5	6,3	32	30V2-0-9
1/4"	1.4542/48	2,3	2,5	4.200				
	1.4542/48	1,6	2,0	7.000				
	1.4542/48	1,0	2,0	10.000				
3/8"	1.4542/48	3,2	4,0	4.200	13	9,5	38	30V3-0-9
	1.4542/48	1,6	2,0	7.000				
	1.4542/48	1,6	2,0	10.000				
9/16"	1.4542/48	8,0	9,0	2.500	20,6	14,3	49	30V4-0-9
	1.4542/48	4,8	6,4	4.200				
	1.4542/48	12,7	14,0	3.500				

